



**AXA
DESIGN**



AXA-USB/485

Optically isolated USB to RS485 Converter

AXA INTERFACE DEVICES

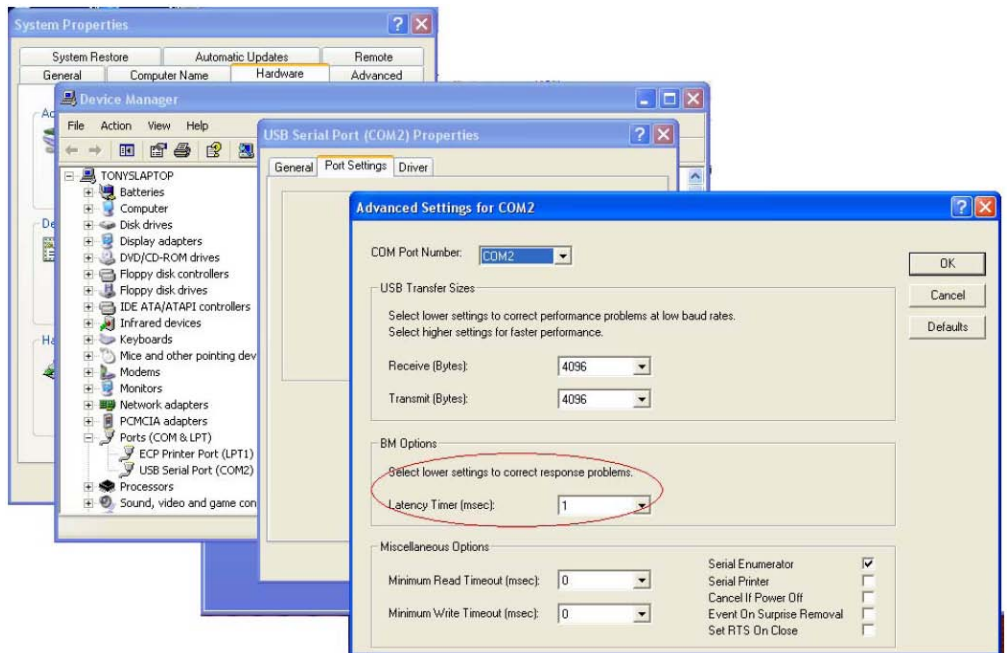
The AXA range of interface devices give you cost effective and simply integration between Dynet and a range of other protocols, 232, 485, DMX and GSM are all handled with ease thanks to clever hardware and a simplified software package.

AXA-USB/485

The AXA-USB/485 is intended for use as a programming tool, for use with computers that don't have a standard serial communication port

IN OPERATION

Works with standard Windows XP drivers but you will have to adjust the latency time under the advanced settings for the comm. port. By default it sets the Latency Timer to 16ms, which will need to be reduced (typically 1ms).



MADE AND OWNED
IN AUSTRALIA



AXA-USB/485

Optically Isolated USB to RS485 Converter

smartscape
connected lighting systems

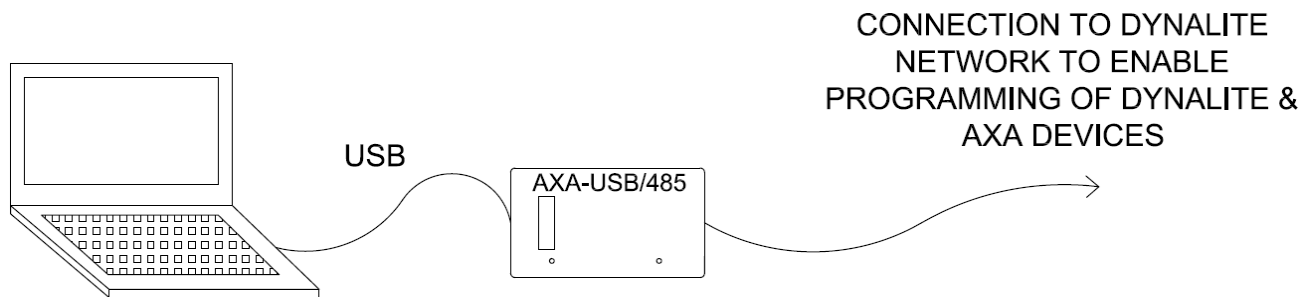
FEATURES

- Supports DLight 2 & Envision Project for Dynalite programming
- Supports Allcomm for AXA programming

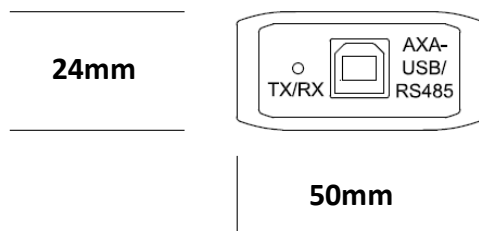
SPECIFICATIONS

- Converts RS485 (9600 Baud) to USB
- 50mA draw from the Dynet network

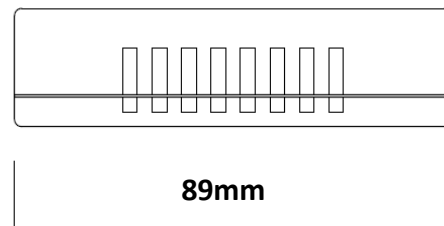
AXA-USB/485 INDICATIVE LAYOUT



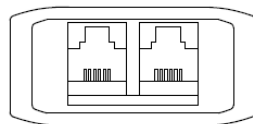
AXA-USB/485 FRONT VIEW



AXA-USB/485 SIDE VIEW



AXA-USB/485 REAR VIEW



AXA-USB/485 TOP VIEW



AXA DESIGN



FOR FURTHER INFORMATION CONTACT:

smartscape
connected lighting systems

PH: 07 3357 1922
E: info@ssqld.com.au
W: www.ssqld.com.au